

BUNDY GEM AND MINERAL NEWS

FEBRUARY/MARCH 2012

PO Box 386
Bundaberg, 4670



2012 Committee

CLUBROOM - 41551500

bundygems@bigpond.com

www.bundaberg.lapidaryclub.com.au

PRESIDENT Robert Ehrlich - 4152 9907

SECRETARY Sherry Leigh -4159 7248

TREASURER Judy Cosgrove -4159907

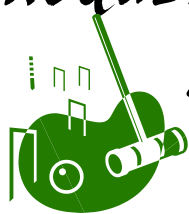
EDITOR Judith Hopwood

gmjmmhopwood@bigpond.com

SESSION TIMES

Mon 7:00 - 10:00 p.m.
Tue 9:00 - 12:00 noon
Tue 1:00 - 5:00 p.m.
Wed 9:00 - 12:00 noon
1:00 - 5:00 p.m.
7:00 - 9:30 p.m.
Thu 7:00 - 9:30 p.m.
Fri 7:00 - 10:00 p.m.
Sat 9:00 - 12:00 noon

CROQUET FUN DAY
25TH MARCH



Session Supervisors 2012

MON GENERAL- The Huths
TUE am SILVER WIRE WORK & BEADING
Cyril Budgen, Sandra Jensen
TUE pm GENERAL - Lester Rogers
WED am SILVERWORK - Rex Wells & Phyllis Bujayer
WED pm GENERAL- The Barnettts
SILVERWORK - Mae Geddes
WED night FACETTING- Ian Jenkins assist. John Groundstroem
THU SILVERWORK - J. Foster
FRI GENERAL - Paddy Peckover
SAT GENERAL - these are subject to change
Jan. 21st R. & N. Huth - J. Cosgrove - C. Maughan
28th G. & L. Rogers - C. & G. Stirrat
Feb. 4th CLOSED - GEMBOREE ENTRIES ONLY
11th R. & N. Huth - J. Cosgrove - C Maughan
18th D. & K. Barnett - J. Cosgrove - R. Ehrlich
25th D. & K. Barnett - G. & L. Rogers
CASTING John Foster, Ian Jenkins, Kerry Dunn, John G.
PATRONS Mae Geddes and Rex Wells

DATES TO REMEMBER

*Club General Meetings every 3rd Tuesday at 7:00
2012*

Gemboree - EASTER 6 to 9 April Bundaberg

FEBRUARY 3RD & 4TH NO WORKSHOPS
FEBRUARY 4TH GEMBOREE ENTRIES -
delivered to Club room - Noon to 4PM
FEBRUARY 13TH GENERAL MEETING
MARCH GENERAL MEETING
MARCH 25TH CROQUET FUN DAY

For more details on all shows see QLACCA calendar or
current *Metal Stone & Glass* magazine.

Thanks to the Office of Jack Dempsey for
their assistance with photocopying.

PRESIDENT'S REPORT

Well here it is 2012 and what a busy year it will be. I will start off with the Christmas break up. It went off quite well with a good roll up. A lovely meal was put on by the ladies whom I must thank. Also thanks to all the members who supplied the salads and so forth. The Christmas basket of goodies was won by Joan Dick.

Thanks to all those who donated goodies to fill the basket. Now we start in the New Year. Firstly thanks to all the members who came along to the working bee on the 14-01-12 they gave us a nice clean club room to start the year, The first thing for the year is for the silver workers that is Graeme World is holding a class on jewellery making on the 26-02-12. He requires at least 5 people to run it. Keep an eye on the notice board for more information. Then on Sunday 25-03- 12 we are trying to get a social day out playing Croquet. The green fees are \$6.00 a head we take our own eats but tea or coffee is supplied. This will require 20 members

to go ahead further information in the club rooms. Then comes the big one at Easter 6-9-04-2012 the national Gemboree. This will require a lot of volunteers to help out. Keep an eye on the notice board for further details. Please help where ever you can because our club will benefit from the profits. With all of that we also have the show our own Gem fair as well as the woodworkers show. So we are in for a busy year.

With all that out of the way I hope you all had a safe and healthy Christmas and New Year. To all those members who are not feeling the best I hope you start to spark on all fours soon and to any new members welcome to the club and I hope your stay with us is good. So until next time keep your noses to the wheel keep turning out the good work. Robert.

Youth members have you finished any of your 600 million old Zebra Stone pieces over the holidays???

CLUB AWARDS NEW LIFE MEMBERSHIP



At the last meeting Trish Flynn was awarded a Life Membership of the Club. This award is given to members who have given their time and energy for over 10 years to help make the club what it is today. When the club started in October 1965, there were no club rooms, equipment & no money. If it was not for the enormous work done by the volunteer members over the years we would not have the club & facilities it is now so easy to take for granted. One of these workers has been Trish Flynn. This award is to show in some way the gratitude the club owes Trish. She now joins the list of Life Members who are valued and appreciated hard workers for our club and she is indisputably a well-deserved recipient for life membership. Trish has been in the club for 16 years joined June 1996. In September 1996

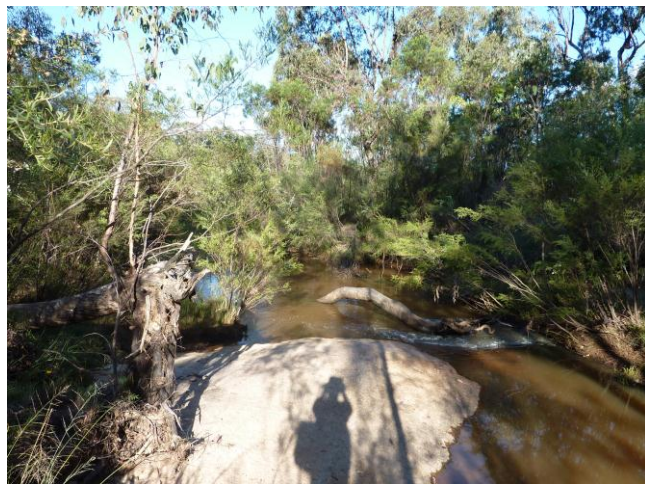
took on the job as Secretary. She has also held down Treasurer position and of course President. She is now Vice President. Trish has been the Gemfair coordinator for 12 years and was Newsletter editor for 2 years and has had a period of being the Silver Supplier purchaser. She is a Session Supervisor and has been an AFLACA delegate for 6 years and the assistant treasurer for 4 years. She has been on the Wide Bay Burnett Gem Club Association for 9 years and is now the main organiser of Gemboree

Wonder what she does in her spare time????????????????????????????????

FOSSICKING IN TINGHA

Lester Rogers' report on fossicking at Inverell caused great excitement in the club. So, on our return journey from Sydney (turn west at Guyra) we had an overnight stop at nearby TINGHA. We decided on Tingha as Quartz sounded easier to find than Sapphires and also easier to work for the non-faceters. We are very new to the club and this was our first real dig. We got the map of fossicking areas from the Inverell Tourism Centre which is beautifully set up with wonderful displays of what other fossickers have found and just to cover all aspects we bought a bag of "Sapphire containing gravel".

We camped the night at Tingha Caravan Park which was clean & quiet.



Tingha itself is very interesting, being an old Tin Mining site there are lots of reminders of this era. The town swimming pool next to the caravan park is the old tin mine which filled with water. It is so deep it has a deep blue colour, the old mine machinery is apparently still at the bottom of the deep end. The museum looked interesting but was closed when we visited. Tingha is one of the only towns in Australia which still has a town common. This means the town is fenced & the residents' cattle have right of way. Our first fossicking stop in the afternoon was at Stannifer a few kms on the Inverell side. You have to trust the map and keep following the overgrown track but when you get to the end you are rewarded with a beautiful sandy swimming hole & an abundance of water-worn jelly-bean shaped quartz crystals – some are beautifully clear. Thomas found you can even fossick under water. Next morning after some local information from Bob at the Caravan Park we headed out to the Sand mine. Here for \$10 a day you can collect all the Quartz etc. that is sifted from the sand by the grading machine. This wasn't working when we were there so we did it the old fashioned way & fossicked on the mullock heaps. This again was very rewarding with lots of small crystals found and even, we think some of the illusive "Grass stone".

As we are very new to "Fossicking" most of what we found will end up as pretty garden gravel but we did find plenty of interesting pieces in the short time we had. The Sand mine owners say they have people from all over Australia & NZ who come back every year. We recommend Tingha for an interesting stop-over and most rewarding fossicking for the beginners and the experienced.

Judith & Thomas HOPWOOD

FACTS ABOUT

QUARTZ

Quartz is the second-most-abundant mineral in the Earth's continental crust, after feldspar. It is made up of a continuous framework of SiO_4 silicon–oxygen tetrahedra, with each oxygen being shared between two tetrahedra, giving an overall formula SiO_2 . There are many different varieties of quartz, several of which are semi-precious gemstones. Throughout the world, varieties of quartz have been since antiquity the most commonly used minerals in the making of jewelry and hardstone carvings.

Quartz can be cabichoned, faceted or kept as a mineral specimen, depending on the type of stone found. Quartz' hardness makes it durable & suitable for jewelry but still able to be worked with the club's general lapidary equipment. Good clear quartz in its many different colour forms can be faceted into beautiful pieces. Quartz is found in sedimentary, Igneous and Metamorphic rock.

So if you go fossicking for Quartz you are going to find some just about wherever you look.

Quartz comes in many different forms:

Agate - banded variety of chalcedony
Amethyst - purple
Avanturine - feebly translucent chalcedony
Carnelian - flesh red chalcedony
Cat's Eye - chatoyant
Chalcedony - microcrystalline quartz
Chert - cryptocrystalline quartz
Chrysoprase - apple green chalcedony
Citrine - yellow
Flint - microcrystalline quartz
Hornstone - flint

Jasper - red or brown chalcedony
Moss Agate - variety of chalcedony
Plasma - green chalcedony
Prase - leek green chalcedony
Rock Crystal
Rose Quartz - rose colored
Sapphire Quartz - blue colored
Smoky Quartz - brown to black
Tiger Eye - pseudomorph of asbestos



Quartz Specimen Label

Quartz SiO ₂ Locality: Notes:
--

This label will help you start your mineral specimen collection. You need to clear about where it was found as this is very important with mineral collecting.

You must give a clear identification of each specimen (e.g. Quartz Crystal) and give the correct locality of where it was found (eg. Stannifer near TINGHA, NSW).

CLUB SHIRTS

The Club's Emerald Green Polo Shirts are available from BIG W. The Club cloth badge logo is then sewn onto the pocket. These badges are for sale at the club rooms. It will look great at the GEMBOREE if Bundaberg Club members are prominent in their club shirts.

SILVERSMITH HINTS FROM BRAD SMITH

IDENTIFYING UNMARKED SOLDERS

There's plenty of ways to mark your sheet or wire solders, but suppose you forgot to mark them and have a couple that you can't identify. The answer is to compare the melting temperature of the unknowns with that of a known solder. What I do is take a thick scrap of copper or nickel and arrange several solders on it. Ideally, I would have a sample of easy, medium and hard known solders surrounding the unknown solder. Then I heat the plate from the bottom and watch the order in which the solders melt.

INEXPENSIVE ELECTRIC WAX PEN

You can make your own wax pen from a small soldering iron plugged into a light dimmer switch for heat control. Both components are easily found at Radio Shack, a big hardware store or at Harbor Freight. Set the dimmer control just hot enough to melt the wax without producing any smoke.

Look for a soldering iron of around 25-30 watts. File the tip to the shape you prefer or even better get a soldering iron with replaceable tips. Then you can make several tip shapes for different tasks.

SHARP KNIVES FOR CUTTING MOLDS

Cutting molds is easier and more precise with a sharp blade. A new Xacto blade is sufficient for cutting RTV molds but is usually not sharp enough for vulcanized rubber. For that it's best to use scalpel blades available from most jewelry supply companies.

The #11 blade is triangle shaped, and the #12 is hawksbill shaped. I find the hawksbill is particularly nice for cutting the registration keys of the mold.

More Bench Tips by Brad Smith are at groups.yahoo.com/group/BenchTips/ or [facebook.com/BenchTips](https://www.facebook.com/BenchTips)

PICK SHARPENING – recommended by Judy Cosgrove

Rod Bettiens – Blacksmith (Hobby) at Mt. Perry

Home phone: 4156 3200 Mobile: 0458 563206

Rod sharpened two picks at \$20 per pick.

Call nights only as he runs 2 properties and will normally be out in the paddocks in daylight hours. Rod likes to take his time in doing the job & only lights up his forge when he has a few pieces to do.

WORD QUIZ

How many words can you make from the letters of the word CRYSTAL

There are at least 94 words with more than 2 letters. Get your dictionary out and see if you can find more.

ANSWERS are hidden in the Newsletter!!!!

Glimpse of some of our
Creations.....



Graeme & Maria World
Owner/Operators for 25yrs



23 MAUGHAN STREET
BUNDABERG QLD 4670
PO BOX 2586
BUNDABERG QLD 4670
Phone: (07) 4152 8744
Fax: (07) 4152 8744
E-mail: world_creations@bigpond.com
Mobil 041 4528844

Manufacturing
Jewellers

G.L. & M.A. World



JEWELLERY

MAKING

TUITION

INFORMATION

Ph/Fax: (07) 4152 8744

GRAEME WORLD—MANUFACTURING JEWELLER



With 45 years experience in the Jewellery trade and 25 years operating our own business, we are now looking to pass on our knowledge to others who are willing to learn the art of designing and creating their own piece of jewellery, with easy introductory courses.

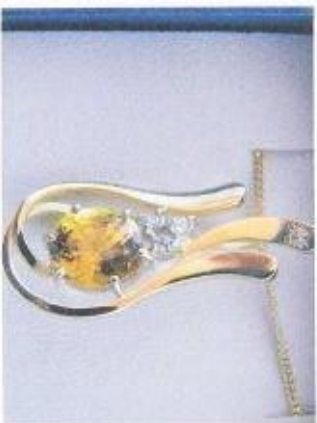


4 OR 8 HOUR JEWELLERY

MAKING COURSE

- Stage 1....Designing
- Stage 2...Choosing the setting
- Stage 3...Hand Making
- Stage 4...Setting
- Stage 5...Polishing

(Handy print out of the exact procedure)



COSTING

\$50.00 per person per 4 Hour

Instruction Course or \$80.00 per person per 8 hour course

(MIN. 5 people)

Full instruction hand out leaflets included

COURSES AVAILABLE TO ALL GEM AND LAPIDARY GROUPS

PRIVATE TUITION ALSO AVAILABLE

23 MAUGHAN STREET
BUNDABERG QLD 4670
PO BOX 2586
BUNDABERG QLD 4670
Phone: (07) 4152 8744
Fax: (07) 4152 8744
E-mail: world_creations@bigpond.com

G.L. & M.A. WORLD

GEMBOREE 2012

COMPETITION ENTRY FORM

Mail to: GEMBOREE 2012
 PO Box 5090, West Bundaberg, Qld, 4670
 Phone: Col Roberts (07) 49342886

*Entry forms, fees and relevant postage do arrive by 2nd February, 2012, with stamped self addressed envelope for return of receipt.
 Make cheques out to QCCA GEMBOREE 2012.*

NAME PHONE MOBILE

ADDRESS POST CODE

CLUB D.O.B (if junior < 18 at 04/2012) NUMBER OF ENTRIES

ENTRY FEES: The entry fee is \$5.00 per competitor within Australia (a fee). Overseas entries are FREE.

INSURANCE: You are strongly urged to send your entries to us by registered mail. We will also return your entries by registered mail, but note that this covers loss only up to \$100. If you require us to cover you for more than \$100 when we return your entries, then you must enclose an extra \$0.50 per \$100 extra cover.

YOUR RETURN INSTRUCTIONS: I request entries to be returned as follows (e.g. Registered Mail, We'll Collect, etc):

ENTRY FEE	\$	Rate fee \$5
RETURN POSTAGE	\$	(probably the same as it cost you - but don't forget registration)
EXTRA INSURANCE	\$	(\$0.50 per \$100 of the cover if required)
TOTAL ENCLOSED	\$	

YOUR SIGNATURE

Section	#	Section	#	Section	#	Section	#	Section	#	Section	#	Section	#
Q 1A.1		I 1A.2		R 1A.3		J 1A.4		O 1A.5		I 1A.6		N 1A.7	
Q 1B.1		I 1B.2		R 1 B.3		J 1B.4		O 1B.5		I 1B.6			
Q 2A.1		I 2A.2		R 2A.3		O 2B.1		R 2B.2					
Q 3.1		I 3.2		R 3.3		J 3.4		O 3.5		N 3.6		J 3.7	
Q 4A.1		N 4A.2		O 4C.1		O 5C.1		R 5C.2		O 5D.1		N 5D.2	
Q 6.1		N 6.2		O 7A.1		N 7A.2		O 7B.1					
N 6A.2		I 6A.2		O 8B.1		I 8B.2		O 9A.1		I 9A.2		N 9B.1	J 9B.2
Q 10.1		I 10.2		R 10.3		J 10.4		O 11.1		I 11.2		N 11.3	J 11.4
Q 12A.1		N 12A.2		O 13.1		N 13.2		O 14.1					
Q 18A.1		I 18A.2		R 18A.3		O 18B.1		I 18B.2		N 18C.1		O 18B.4	
Q 18C.1		N 18C.2		O 18B.3		N 18D.2		O 18E.1		N 18E.2		J 18E.3	
Q 19A.1		N 19A.2		O 19B.1		O 19A.1		N 20A.2		O 21A.1		N 21A.2	O 21D.1
Q 24A.1		N 24A.2		O 24C.1		O 24D.1		O 25.1		I 25.2		N 25.3	J 25.4
Q 26A.1		N 26A.2		O 26B.1		N 26B.2		O 27A.1		O 28B.1			
Show number of entries (1 or 2) beside nominated sections. Entries below to be set up between 2 & 5pm 04/2012													
Q 5A.1		O 5A.1		R 5A.3		J 5A.4		O 5B.1		N 5B.2			
Q 16.1		N 16.2		O 17.1		N 17.2		O 18C.1		N 18C.2		O 28A.1	O 28B.1
Q 22A.1		N 22A.2		O 22B.1		N 22A.4		J 22A.5		O 42B.1		N 42B.2	J 42B.3
Q 44A.1		N 44A.2		I 44B.4		O 44B.4		N 44B.5		O 44B.1		N 44B.2	J 44B.4
Q 24B.4		N 24B.5		I 24B.6		O 27B.1							

Competitive chessboard dimensions

Q 28A.1 Width Depth Height

O 29B.1 Width Depth Height

O 27B.1 Width Depth Height

CHRISTMAS COMPETITION CAPERS 2011

Rachel didn't want Thomas to win, Thomas wanted to beat Rachel at least once, Hannah and Joshua wanted to be able to pick the slab for first prize.....and half an hour from starting time Graham couldn't resist the challenge of a competition....he'd show these juniors a thing or two.

NEW TITLE – 'GRAHAM'S SHAME'

The Stirrat's organised a Christmas challenge for all the juniors who were there on the last club Saturday. They donated a piece of agate, marked to 18x13, trimmed and ground to the mark. The challenge was to finish the cabochon before midday when John Groundstroem would judge the results. Every entrant would receive a Spring Creek agate nodule and the winner could choose a slab of agate from the Stirrat collection.

A couple of other juniors, who had last minute Christmas presents to finish, had to jostle the competitors for grinders. As no one needed his supervisory help, and with fingers itching to show his great 'skills,' Graham picked out his piece and went to work. All was quiet, apart from the machinery. Thomas's eyes kept watch over Rachel's progress. Rachel kept that; 'if you think you're going to beat me,' look on her face. Hannah and Joshua were too engrossed in their stones to worry about the time. Graham had that smug look on his face.

Supervisor Judy (Grandma Judy) kept her watchful eye over Josh and Hannah, at the ready to get them out of a mess. Josh's agate did what agate does best – crack in a very noticeable place. The panic was on to start again and with many words of encouragement he made it to the finish line although with an unpolished product.

Time was called at 11:45 as the last stone came off the polishing wheel – no time to take them off the stick. John was asked to judge them on shape and initial grinding rather than the final polished product. After five minutes deliberation the verdict was in.

- 1st Rachel
- 2nd Thomas
- 3rd Graham
- 4th Hannah and Josh

Rachel dived in for first pick of the slabs – the one with least lines – she wants to win at Gemboree. Thomas picked the most 'interesting' piece – something for a novelty item maybe?

Joshua took his time to pick from the remainder while Hannah was jiggling with anticipation at getting her turn. Her wait was rewarded with what I thought was the prettiest piece of pastel pinks and blues from the Black Soil area. Graham sat quietly in the background.

NB: Judy feels that if Josh had finished, the results may be different Graham

CROQUET SOCIAL DAY

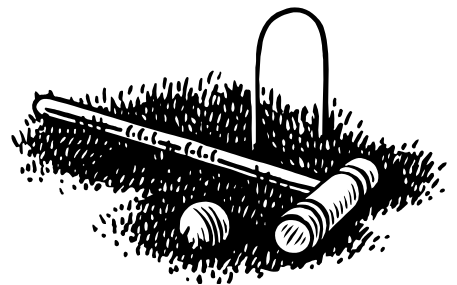
Our next Social Day will be on 25th March 2012 at Bundaberg Croquet Club at Alexander Park, Quay St.

We will be playing Golf Croquet which some of our members have played before and found lots of FUN!!

The very pleasant surroundings down by the river are ideal for a family outing and very cheap – costs just \$6 per head to play.

Bring your own food and the Croquet Club will provide free tea & coffee!!

Bring your family & friends and flat soled shoes and slip, slop, slap!!



EDITOR'S NOTE

Columnists and contributors required! It would be great if other members of the Club who have fossicking stories or expertise in particular areas would share their knowledge and experiences as those who took time to contribute to this Newsletter. It's better if it's not too long and pictures add interest. It can be a series of articles or a one-off. Just email your contributions to Judith Hopwood on gmjmmhopwood@bigpond.com with Gem Club as the subject.

If you have noted I am an extreme novice so if you have a better fossicking story or general item send them to me so I can create a better newsletter.

Judith

GEMBOREE 2012

BUNDABERG 6 - 9 APRIL 2012
BUNDABERG SHOWGROUND, QLD



STYLAR
AGYLS ARTSY ARYLS GARLS GARTS GLARY GLAST CLAYS LYART SALTY SATYR SGALY SCART SCARY SLATY STRAY TALCS TRAYS
ACTS ACYL ALTS ARCS ARTS ARTY ARYL CARL GARS CART CAST CATS GAYS CLAY CYST LACS LACY LARS LAST LATS LAYS RAGY RATS RAYS RYAS SALT SCAR SCAT SCRY SLAT SLAY STAR STAY TALC
TARS TRAY TSAR
ACT ALS ALT ARC ARS ART AYS GAR CAT GAY CRY LAG LAR LAS LAT LAY RAS RAT RAY RYA SAC SAL SAT SAY SLY STY TAR TAS TRY YAR
AR AS AT AY LA TA YA

From

/// Bundaberg Gem & Mineral Soc. Inc. ///
/// PO Box 386 ///
/// Bundaberg ///
/// 4670 ///

